

August, 2006

# Compass Points

Kenosha County's Comprehensive Planning Newsletter

## Fast Facts about Kenosha County's Multi-Jurisdictional Comprehensive Plan

### Kenosha County receives planning grant

Kenosha County was awarded a \$364,000 grant from the Wisconsin Department of Administration in March 2006. The grant will be used to prepare a comprehensive plan for Kenosha County and nine participating local governments:

- ◇ City of Kenosha
- ◇ Village of Pleasant Prairie
- ◇ Village of Silver Lake
- ◇ Town of Brighton
- ◇ Town of Bristol
- ◇ Town of Paris
- ◇ Town of Salem
- ◇ Town of Somers
- ◇ Town of Wheatland



Lt. Governor Barbara Lawton presents Mayor Antaramian and County Executive Allan Kehl with the comprehensive planning grant award.

### Grant Guidelines:

Kenosha County staff and officials will work with local governments, SEWRPC, and UW-Extension to produce the comprehensive plan. SEWRPC staff will draft the plan chapters for review by County and UW-Extension staff, an advisory committee composed of county and local representatives and officials, citizens and interest groups.

Under the grant, the County and participating local governments will have three years to prepare and adopt a comprehensive plan. The grant period will begin on June 1, 2006, and end on May 31, 2009.

The comprehensive plan must be adopted by an ordinance of the governing body. The Kenosha County Board and the Common Council, Village Board, and Town Board of each participating city, village, and town must adopt a comprehensive plan by the end of the grant period.

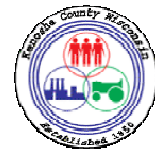
The County will provide the local match required by the grant. Participating local governments will not be asked for any direct financial contribution for preparation of the multi-jurisdictional comprehensive plan. Local governments may enter into a separate agreement with SEWRPC to prepare an optional local plan report. The cost for the local report would be based on the staff time and printing costs incurred by SEWRPC.

### In This Edition:

- ◇ Kenosha County's Comprehensive Planning Grant
- ◇ Building Consistency Among Plans
- ◇ Impact on Growth and Development

### Your Comprehensive Planning Team:

- ◇ John Roth, Planning Manager, Kenosha County Planning and Development



- ◇ Nancy Anderson, Chief Community Assistance Planner, SEWRPC
- ◇ Jesse Gotz, Community Assistance Planner, SEWRPC



- ◇ Annie Jones, Community Development Educator, Kenosha County UW-Extension

UW Extension



## *What are the Benefits of Comprehensive Planning?*

Cooperative planning brings representatives of neighboring communities together to share ideas and concerns and to learn from one another. A partnership approach to planning by definition requires extensive intergovernmental communication. This minimizes the risk of a community not knowing what a neighboring community may think about a development issue. The planning staff recognizes this value and will seek to capitalize on every opportunity to build intergovernmental relationships through the planning process.



## *How will we Build Consistency Between Plans?*

Each governing body has sole authority to adopt a comprehensive plan for the area within its municipal or town boundaries. The County Board has sole authority for adopting a County comprehensive plan. State law does not require that local plans be consistent with the County plan, or that city and village plans for extraterritorial areas be consistent with the town plan for the same area.



## *What about Consistency Between Plans and Ordinances?*

Each unit of government that administers a zoning, subdivision, or official mapping ordinance must, beginning on January 1, 2010, administer that ordinance consistent with the recommendations of the comprehensive plan adopted by that unit of government.

For example, Kenosha County must make decisions regarding rezonings, conditional use permits, and other approvals under the County zoning ordinance in accordance with the recommendations of the comprehensive plan adopted by the County Board.

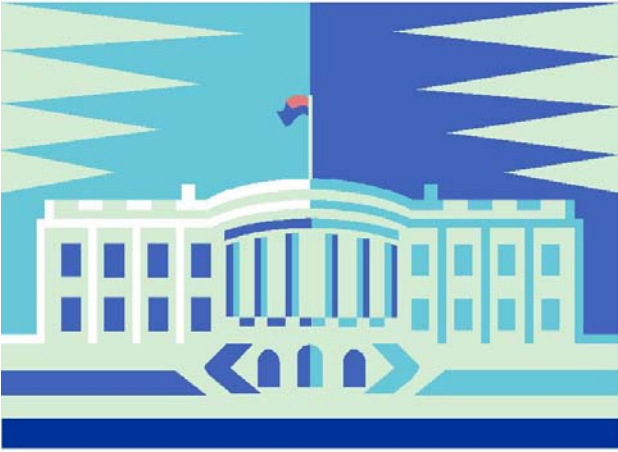
As another example, a town reviewing a proposed subdivision under the Town land division ordinance must be sure the subdivision is in accordance with the recommendations of the comprehensive plan adopted by the Town Board.

## *What about Existing Local Plans?*

The planning staff has no intention to start from scratch in conducting the comprehensive planning program. It is recognized that many communities in the County have undertaken planning efforts in the past and have attained a certain level of comfort with respect to the policies embedded in those plans. It is the staff's intent to build on that planning base and update, extend, and expand that base to meet the requirements of the comprehensive planning law.

As required by Section 59.69 (3) (b) of the Statutes, the multi-jurisdictional comprehensive plan will incorporate the comprehensive plans adopted by the Villages of Paddock Lake and Twin Lakes, which are not participating in the joint planning process. Although not required by State law, the multi-jurisdictional plan will also incorporate the Town of Randall comprehensive plan, which was prepared as part of a cooperative planning process between Randall and Twin Lakes.

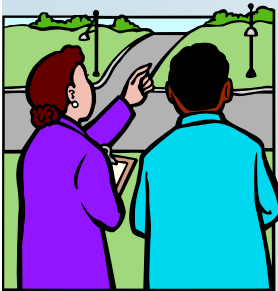




### *Who has Authority?*

The comprehensive planning law did not change the wide range of powers, duties, and responsibilities that the Wisconsin Statutes convey to each level of government—town, village, city, or county. Whatever powers an individual municipality has with respect to such matters as annexation, consolidation, extraterritorial authority, zoning, and land division approval, will not in any way be affected by the comprehensive planning partnership. The partnership neither enhances nor diminishes those powers, duties, and responsibilities.

### *What is the Expected Impact on Continued Growth and Development?*



The plan is not intended to stop or impede growth in Kenosha County. Rather, it is intended to help direct growth to areas where it can be provided with sewerage, water supply, and other services in the most efficient and cost-effective way while protecting areas with important natural resources and avoiding floodplains and other hazardous areas. Consideration will also

be given to accommodating growth that is intended to be rural in character.

### *What about Impact on Schools and School Districts?*

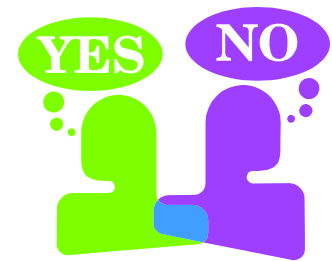
School districts operate independently of County and local governments. Because each school district in the County includes multiple local governments, decisions made by one local government affect residents in other local governments within the district. The comprehensive planning process will attempt to design a phasing plan for future development to help moderate the impacts of future development on schools and other public services and facilities.



### *How will the Planning Reports be Developed?*

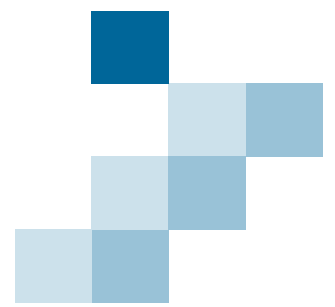
The multi-jurisdictional (County) comprehensive plan will be documented in a SEWRPC report. The multi-jurisdictional plan will contain sufficient detail, and will be designed, to serve as the comprehensive plan for each participating local government.

If desired, separate plan reports will be produced for participating local governments. The local plan reports will be based on and derived from the multi-jurisdictional plan. The general content, format, and cost of local plan reports will be specified in an agreement between SEWRPC and each local government that requests a local report.



### *How will we Handle Disagreements?*

It is recognized from the onset that there are many issues to be addressed in the comprehensive planning process and that reaching full agreement among all of the planning partners on every issue will not occur. Accordingly, the planning process will embrace the concept of “agreeing to disagree” and will document disagreements among the partner local governments on specific issues in the “intergovernmental cooperation” element of the plan. Such disagreements are expected and will be forthrightly dealt with in the planning process.



*Welcome to Compass Points -*  
**the Inaugural Newsletter**  
**for the Kenosha County**  
**Comprehensive Planning Process!**

*Dedicated to Keeping You Informed!*

*Next Issue:*

- ◇ Meet the Multi-Jurisdictional Advisory Committee
- ◇ Public Participation

