



MULTI-JURISDICTIONAL COMPREHENSIVE PLAN KENOSHA COUNTY FACT SHEET

Countywide Population, Household and Employment Trends (Multi-Jurisdictional Comprehensive Plan Preliminary Draft Chapter II)

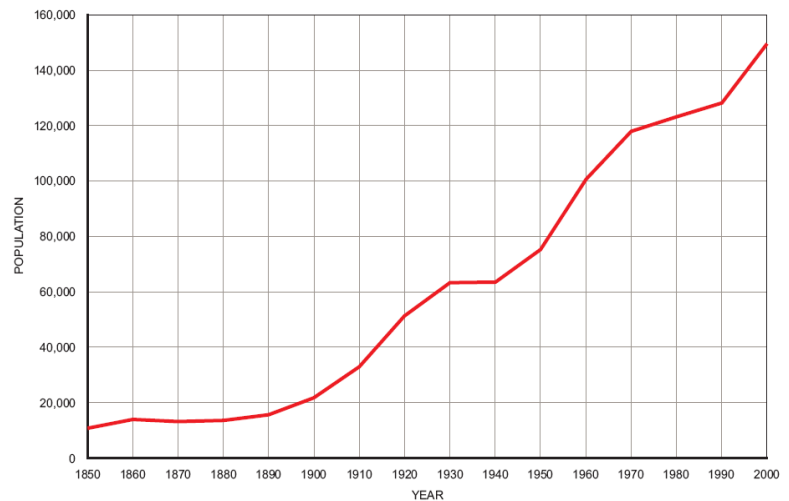
Population Trends

Between 1940 and 2000, Kenosha County grew by 86,072 residents, or about 136%. (In the same period, the Southeastern Wisconsin Region grew by 81%; the State grew by 71%; and the nation grew by 113%.)

Between 1990 and 2000, about 46% of the County's population growth occurred in the City of Kenosha, about 25% occurred in towns and about 29% occurred in villages.

From 1990 to 2000, the City of Kenosha increased by 9,926 residents, or over 12%. In the same time, the Town of Salem grew by 38%; the Town of Pleasant Prairie grew by 34%; and the Village of Silver Lake grew by 30%.

RESIDENT POPULATION OF KENOSHA COUNTY: 1850-2000



Source: U.S. Census Bureau and SEWRPC.

Age Distribution

The median age of Kenosha County residents in 2000 was about 35 years. The median age in local communities ranged from 34 in the City of Kenosha to 40 in the Town of Paris.

- About 30% of County residents were under the age of 20
- About 58% were between the ages of 20 and 64
- About 11% were 65 or older

Racial Composition

In 2000, Kenosha County had a relatively homogenous population:

- 88.4% White
- 5.1% Black or African American
- 0.9% Asian
- 0.4% American Indian or Alaskan Native
- 1.9% Multi-Racial

Due to Federal definitions, Hispanics are not considered a racial group, but rather an ethnic one. In 2000, 10,757 persons (7.2% of County residents) were Hispanic.

POPULATION TRENDS IN KENOSHA COUNTY COMMUNITIES: 1980-2005

Community	Year				Change 1990-2000	
	1980	1990	2000	2005 ^a	Number	Percent
Towns						
Brighton	1,180	1,264	1,450	1,527	186	14.7
Bristol	3,599	3,968	4,538	4,747	570	14.4
Paris	1,612	1,482	1,473	1,523	-9	-0.6
Randall	2,155	2,395	2,929	3,153	534	22.3
Salem	6,292	7,146	9,871	11,074	2,725	38.1
Somers	7,724	7,748	9,059	9,352	1,311	16.9
Wheatland	2,908	3,263	3,292	3,410	29	0.9
Villages						
Paddock Lake	2,207	2,662	3,012	3,100	350	13.1
Pleasant Prairie	12,703	12,037	16,136	18,606	4,099	34.1
Silver Lake	1,598	1,801	2,341	2,455	540	30.0
Twin Lakes	3,474	3,989	5,124	5,487	1,135	28.5
Cities						
Kenosha	77,685	80,426	90,352	93,785	9,926	12.3
Kenosha County	123,137	128,181	149,577	158,219	21,396	16.7

^a The 2005 population levels are estimates by the Wisconsin Department of Administration. All other years are from the U.S. Census.

Source: U.S. Bureau of the Census, Wisconsin Department of Administration, and SEWRPC.

POPULATION TRENDS

Educational Attainment

In 2000, of County residents at least 25 years old:

- 84% had attained a high school or higher level of education
- Just over 50% had attended some college or earned an associate, bachelor or graduate degree

HOUSEHOLD TRENDS

Household: A household includes all persons who occupy a housing unit, which is defined by the US Census Bureau as a house, apartment, mobile home, a group of rooms or a single room that is occupied as separate living quarters.

Existing Households

In 2000, there were 56,057 households in Kenosha County, and the average household size was 2.6 persons.

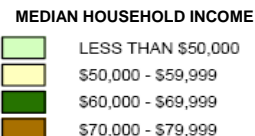
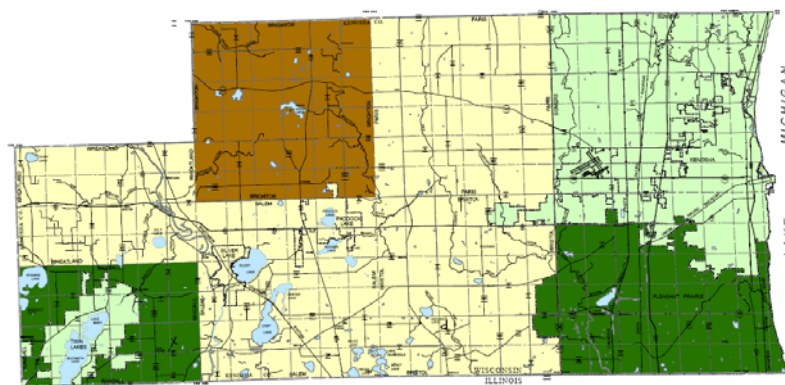
Household Income

In 1999, the median annual household income of all households in the County was \$46,970. Median incomes tended to be higher in the towns and villages than in the City of Kenosha.

Poverty in Kenosha County

About 7% of the households in the County were below the poverty level. The percentage of households living in poverty ranged from about 1% in the Town of Brighton to almost 9% in the City of Kenosha.

MEDIAN HOUSEHOLD INCOME BY COMMUNITY IN KENOSHA COUNTY: 2000



Source: U.S. Bureau of the Census and SEWRPC.

HOUSEHOLD CHARACTERISTICS IN KENOSHA COUNTY COMMUNITIES

COMMUNITY	NUMBER OF HOUSEHOLDS ^a	AVERAGE HOUSEHOLD SIZE ^a	MEDIAN ANNUAL HOUSEHOLD INCOME ^b	% OF HOUSEHOLDS BELOW POVERTY LINE ^b
Towns				
Brighton	504	2.88	\$70,078	1.2
Bristol	1,715	2.65	\$54,661	2.3
Paris	535	2.75	\$54,375	4.7
Randall	1,031	2.84	\$63,062	3.8
Salem	3,529	2.79	\$54,392	6.5
Somers	3,399	2.45	\$49,608	6.5
Wheatland	1,209	2.72	\$52,386	7.4
Villages				
Paddock Lake	1,056	2.84	\$53,382	1.4
Pleasant Prairie	5,819	2.73	\$62,856	3.3
Silver Lake	876	2.67	\$50,431	5.5
Twin Lakes	1,973	2.58	\$46,601	7.3
Cities				
Kenosha	34,411	2.54	\$41,902	8.8
KENOSHA COUNTY	56,057	2.60	\$46,970	7.3

^a Data from 2000

^b Data from 1999

EMPLOYMENT TRENDS

In 2000, there were 77,980 County residents in the labor force. Of that number,

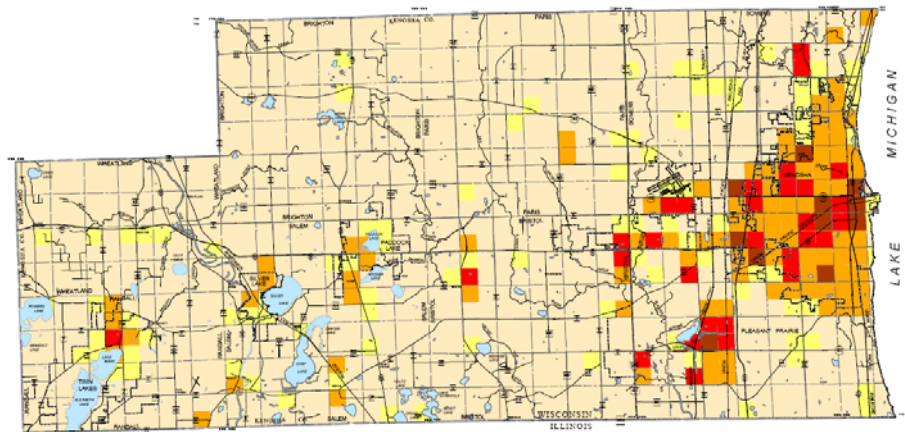
- 73,236 residents (almost 94%) were employed at the time of the Census.
- 4,473 were unemployed.

About 69% of all County residents age 16 years and older were in the labor force. The remaining 31% were retired or not actively looking for work.

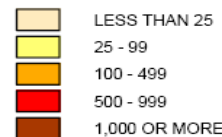
Of the County's employed workforce:

- 29% were employed in management, professional and related occupations.
- 27% were employed in sales and office occupations.
- 20% were employed in production, transportation and material moving occupations.
- 14% were employed in service occupations.
- 10% were employed in construction, extraction and maintenance occupations.
- Less than 0.5% were employed in farming, fishing and forestry occupations.

EMPLOYMENT DISTRIBUTION IN KENOSHA COUNTY: 2000



JOBS PER U.S. PUBLIC LAND SURVEY ONE-QUARTER SECTION



Source: Wisconsin Department of Workforce Development and SEWRPC.

Place of Work

In 1999, just over 56% of employed Kenosha County residents (40,489 people) worked in the County.

Of the County residents who commuted:

- 21% worked in Lake County, Illinois
- 9% worked in Racine County
- 4% worked in Cook County, Illinois
- 3% worked in Milwaukee County

According to Census 2000 data, 12,468 workers were commuting into Kenosha for work. The highest percentage, representing 11% of the Kenosha County Workforce, came from Racine County.

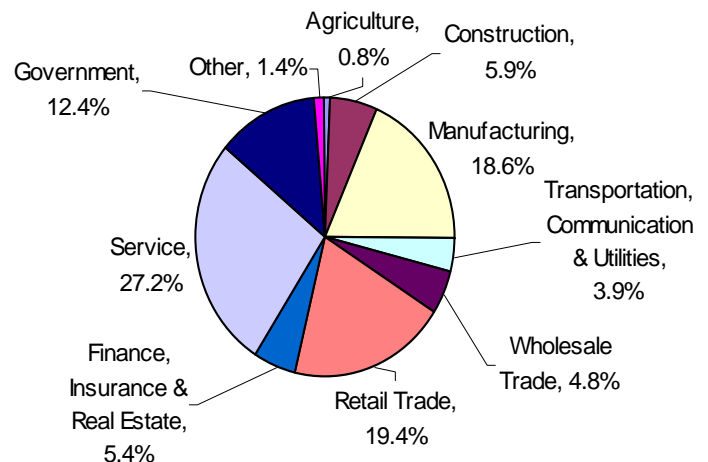
Total Employment Levels

68,700 jobs were located in Kenosha County in 2000. This was approximately 5% of the total number of jobs in the Southeastern Wisconsin Region.

Between 1970 and 2000, there was a 63% increase in jobs in Kenosha County.

In the same time period, there was a 23% decrease in manufacturing jobs and a 50% decrease in agricultural jobs.

PERCENTAGE OF JOBS BY GENERAL INDUSTRY GROUP IN KENOSHA COUNTY: 2000



Source: US Bureau of Economic Analysis & SEWRPC