

KENOSHA COUNTY MULTI-JURISDICTIONAL COMPREHENSIVE PLAN

TOWN OF BRIGHTON FACT SHEET

Employment Trends

In 2000, 844 residents of the Town of Brighton were in the labor force. Of that number, 98% were employed, and 2% were unemployed at the time of the Census. This compares with a countywide rate of 94% employed and 6% unemployed.

Occupations of the Employed Workforce:

- 30% were employed in management, professional and related occupations
- 28% were employed in sales and office occupations
- 17% were employed in construction, extraction and maintenance occupations
- 16% were employed in production, transportation and material moving occupations
- 8% were employed in service occupations
- Less than 1% were employed in farming, fishing and forestry occupations

EMPLOYMENT BY GENERAL INDUSTRY GROUP IN
KENOSHA COUNTY: 1970 AND 2000

GENERAL INDUSTRY GROUP	1970	2000	% CHANGE
Agriculture	1,369	583	-57.4
Construction	1,568	4,048	158.2
Manufacturing	16,521	12,801	-22.5
Transportation, Communication, and Utilities	1,352	2,651	96.1
Wholesale Trade	715	3,267	356.9
Retail Trade	7,408	13,349	80.2
Finance, Insurance, and Real Estate	1,344	3,726	177.2
Service	6,896	18,706	171.3
Government ^a	4,828	8,534	76.8
Other ^b	109	989	807.3
TOTAL	42,110	68,654	63.0

^a Includes all nonmilitary government agencies and enterprises

^b Includes agricultural services, forestry, commercial fishing, mining, and unclassified jobs
Source: U.S. Bureau of Economic Analysis and SEWRPC

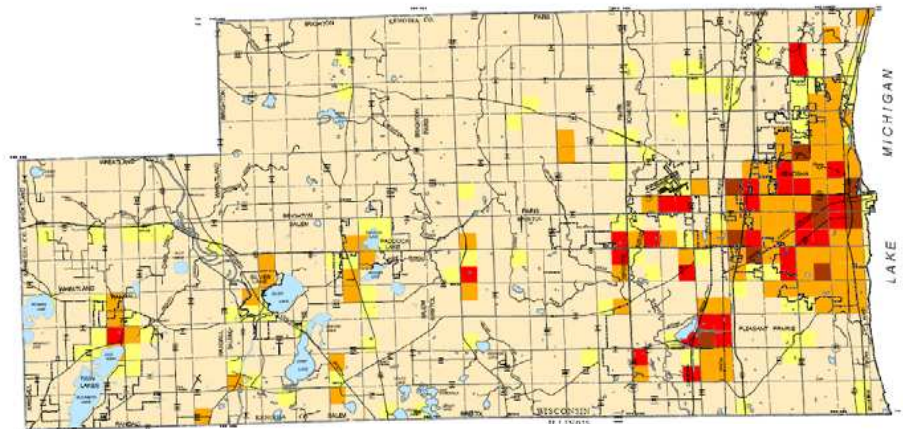
Place of Work

In 2000, about 15% of employed Town of Brighton residents (121 persons) worked in the Town.

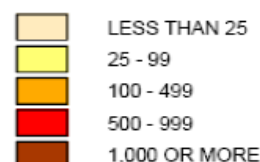
Most common work destinations for residents who commuted were:

- 21% to Racine County
- 18% to Lake County
- 15% to the City of Kenosha
- 18% to somewhere else in Kenosha County
- 13% elsewhere

EMPLOYMENT DISTRIBUTION IN KENOSHA COUNTY: 2000



JOBS PER U.S. PUBLIC LAND
SURVEY ONE-QUARTER SECTION



Source: Wisconsin Department of Workforce Development and SEWRPC.